

Melt Pressure Transmitter



Features

- signal output:4~20mA,4~20mA+Hart protocol
- accuracy grade:0.5%F.S
- special diaphragm coating
- special electronic design,super strong anti-interference

Applications

injection molding industry
chemical fiber industry

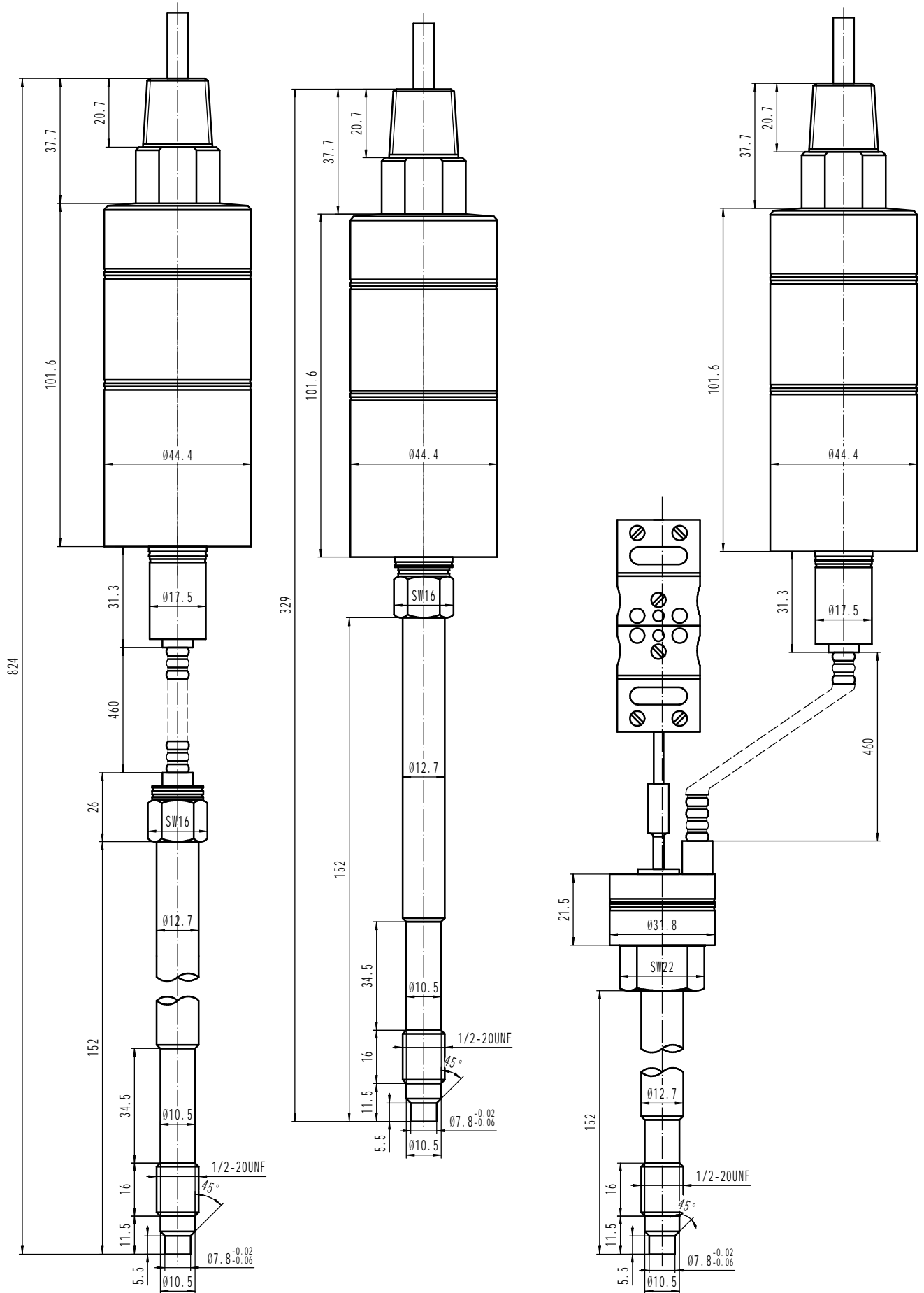
Description

Intrinsically safe melt pressure transmitter is specific to the need of dangerous anti-explosive area and remote control.It has all welded shell and special electronic design,which make it reach the anti-hazard classification of Exib II CT4.This series adopts standard threaded connection and can keep high stability and long lifespan at high temperature of 400 °C.

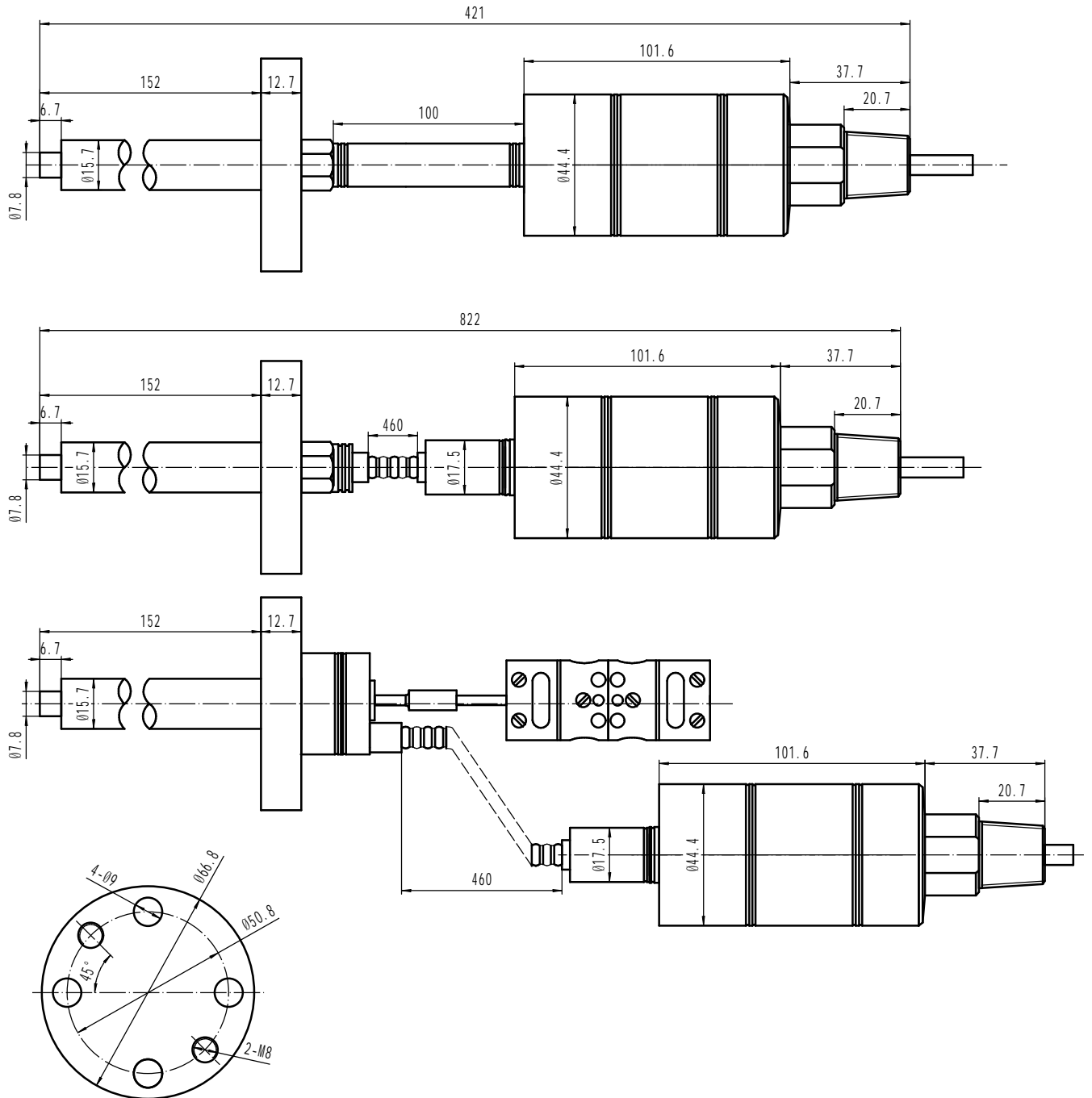
Technical Parameters

Input Voltage	12~30VDC	Bridge Resistance	350Ω
Output Signal	4~20mA,4~20mA+Hart	Diaphragm Material	17-4PH
Accuracy Grade	±0.5%F.S	Diaphragm Temp	400℃
Pressure Range	0~3.5MPa,0~200MPa	E-Connection	1/2-14NPT lead-wire
Pressure Unit	psi,bar,MPa	Mounting Torque	40N.m Max
Overload Capacity	1.5 times rated pressure	Process Connection	thread or flange connection
Zero Temp Drift	0.003MPa/℃	Protection Level	IP65
Electrical Environmental Temp	-20~85℃	Temp Measuring Components	E,J,K type or Pt100
Response Time	<10ms		

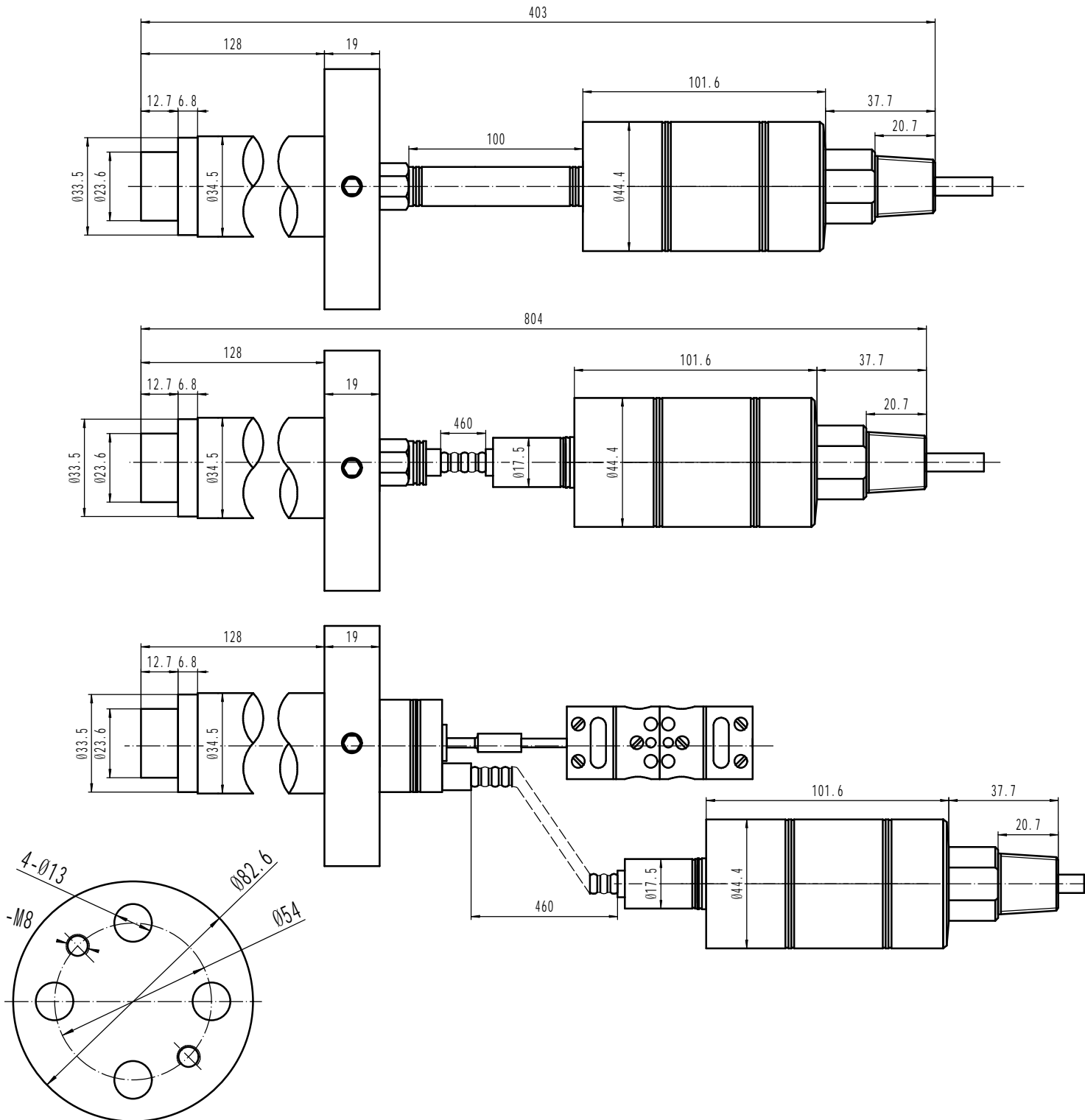
Dimension



Dimension



Dimension



E-Connection

Lead-Wire	2-Wire	Cable Colour
	E+	Red
	E-	Black
	GND	Green

Note: E refers to power supply; GND refers to ground wire

6-PIN Connector	Current Output Signal (4-20mA)					
	A	B	C	D	E	F
	E+	E-			CAL	CAL
	Red	Black			Blue	Orange

